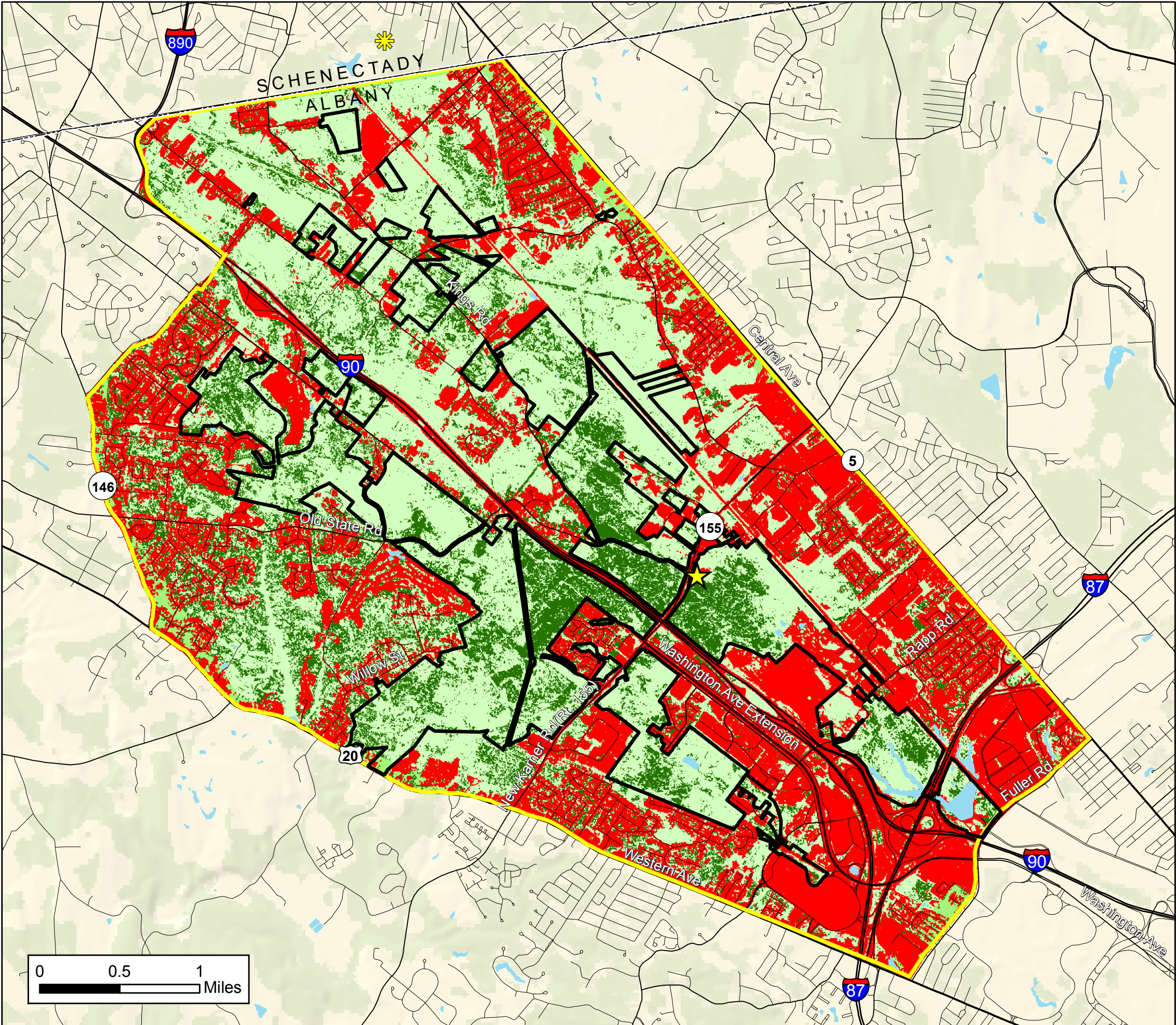


Management Plan For The Albany Pine Bush Preserve



Discovery Center



Woodlawn Preserve



Preserve Boundary



Study Area

13,000 acres

Land Cover

Pitch Pine-Scrub Oak

Other Natural Vegetation

Developed

Water

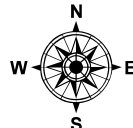
Roads



Sources:

Land Cover - 2014, Seleen
 Tree Canopy Cover - 2001, USGS
 Roads - 2009, NY CSCIC

Prepared By:



March 2017

Figure 2:
 Land Use in the
 Albany Pine Bush

Prepared by: Tyler Briggs, Fire Management and GIS Specialist

